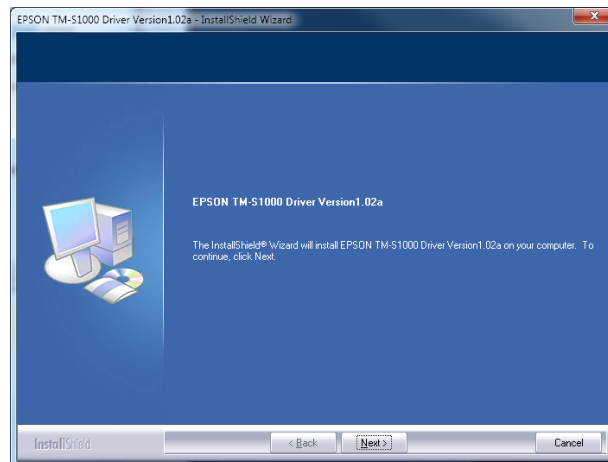


### Epson Driver Installation

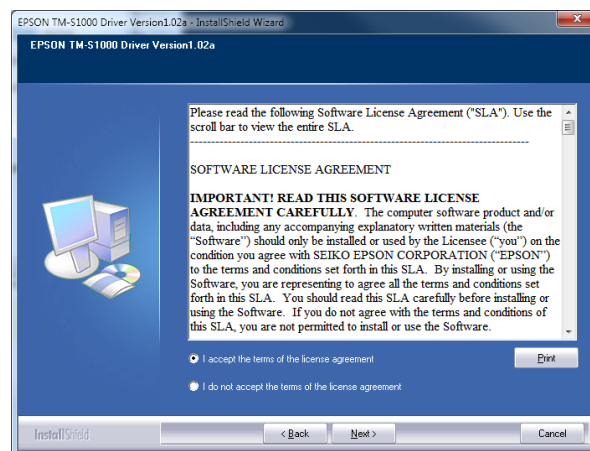
With the installation of the Contributions Application you will need to install the Epson driver.

COMPONENT	REQUIRED MODEL	NOTES
Computer workstation	No specific model is required	Small form factor is usually preferred
Check Scanner	Epson TM-S1000 Scanner	90 DPM Part #: A41A266A8921 90 Documents Per Minute  60 DPM Part #: A41A266A8941 60 Documents Per Minute

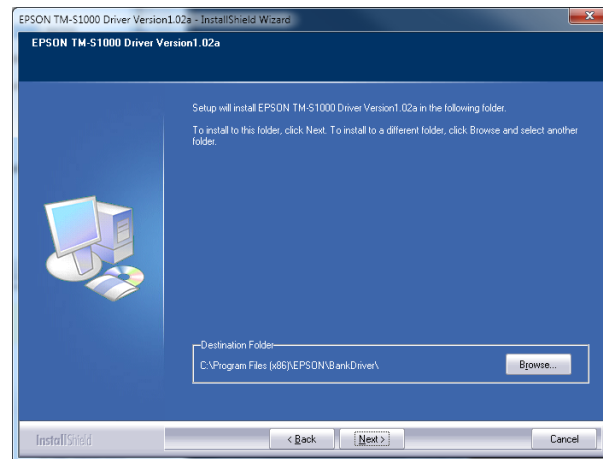
1. Begin the installation by extracting the Epson.zip to the computer.
2. In the Epson folder double click the Setup.exe file



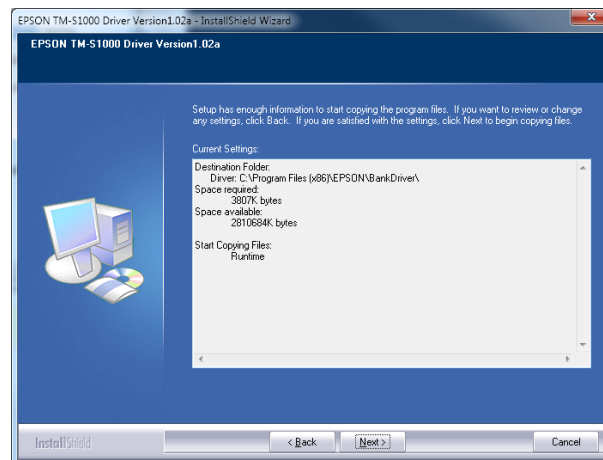
3. Click Next.



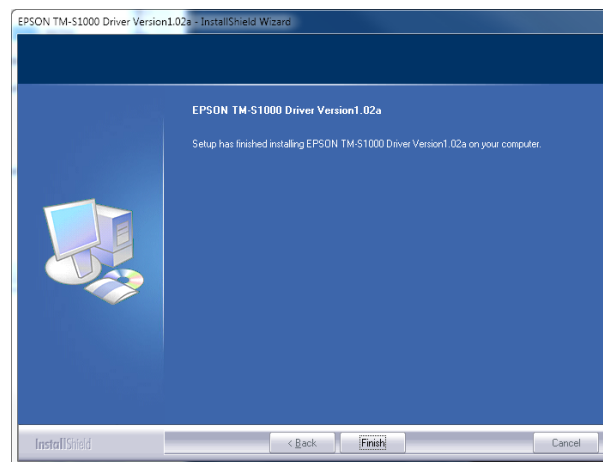
4. Accept the License Agreement then click Next.



5. Accept the Default Destination Folder by clicking Next.



6. Click Next.
7. The driver will then be installed.



8. Click Finish.
9. Plug in the Epson Scanner