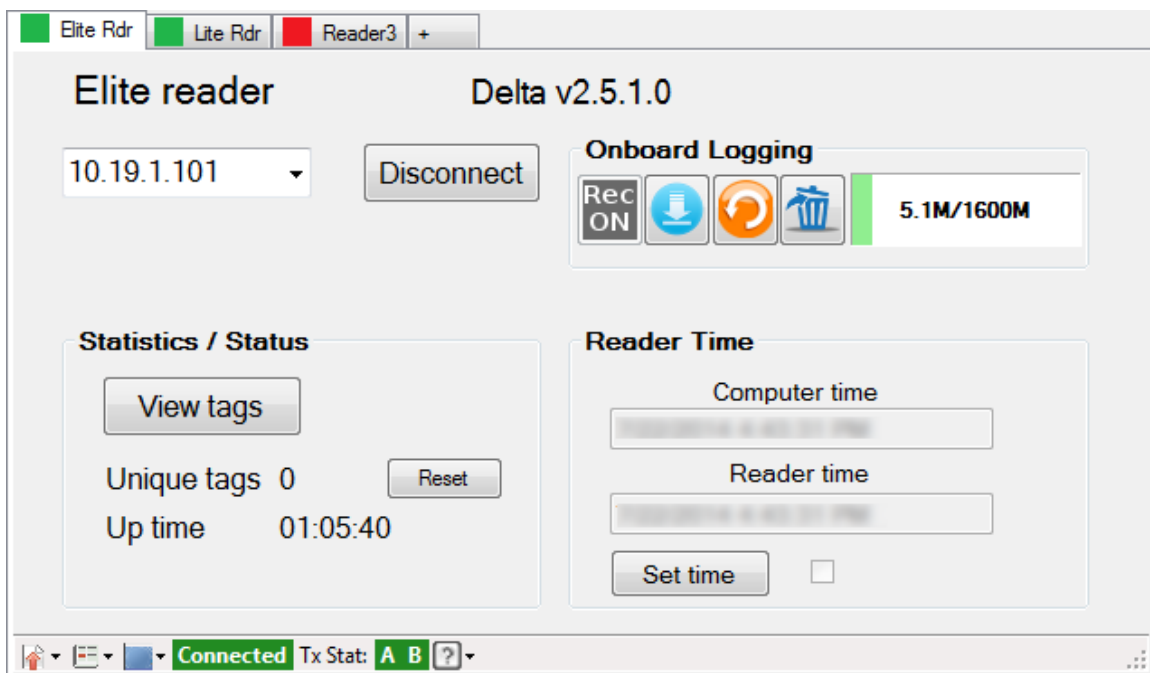


# IPICO Sports

## Dashboard



## User Manual

V\_3.1.0.1 and later

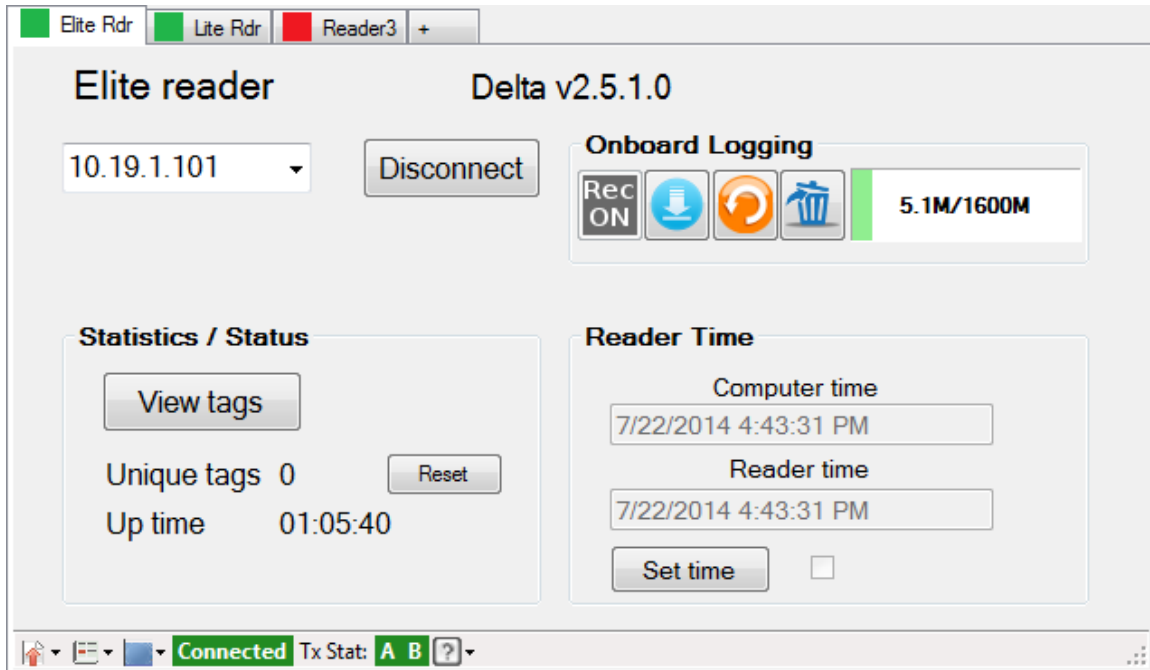
August 15, 2014

## Table of Contents

<b>Introduction</b>	<b>3</b>
<b>Software Installation</b>	<b>4</b>
<b>Quick Start</b>	<b>4</b>
<b>Lite Reader Quick Start</b>	<b>5</b>
<b>Elite Reader Quick Start</b>	<b>8</b>
<b>Features Description</b>	<b>11</b>
<i>Onboard Logging</i>	<i>12</i>
<i>View Tags</i>	<i>13</i>
<i>Tab Menu</i>	<i>14</i>
<i>Task and Status Bar</i>	<i>15</i>
Lite Reader	15
Elite Reader	16
<b>Appendix</b>	<b>18</b>
<i>Use Cases - Examples</i>	<i>18</i>
Fixing Times	18
Installing TimeLink VPN Keys	18
Lite Reader Onboard Logging	19

## Introduction

The IPICO Sports Dashboard is a Windows based reader management application. It performs several functions valuable to race timers using IPICO sports equipment to time their events.



The Dashboard is frequently used to synchronize the time between the PC and the readers but it has many other useful functions as well. This document is designed to provide answers for users of this tool. It is organized to help you get started quickly. The Quick Start section will show how to connect to the reader and give a brief tutorial on the major functions. The Features Description section will go over each button, box and menu item to describe the functions available in the Dashboard application.

The Use Cases section will present several examples of how the Dashboard can be used to improve the performance of your readers and make management of the reader easier, in both routine and exceptional situations.

The IPICO Sports Team

## Software Installation

To install the dashboard application, point your browser to the URL below:

[http://www.ipicosports.com/support/download/Dashboard\\_V3.1.0.0\\_install.exe](http://www.ipicosports.com/support/download/Dashboard_V3.1.0.0_install.exe)

This will download the application installer file, open the downloaded file by double-clicking it and select Run in the dialog box that appears.

## Quick Start

The menus in the Dashboard are context-aware, that means the menus are different depending on the reader that is connected to. This is useful to minimize the clutter and to help identify the reader. Only the functions available on that reader model are presented and available for use.

## Lite Reader Quick Start

To connect the Dashboard to a Lite reader, please make sure the reader is connected via the Ethernet connection (or WiFi, if configured) to the PC running the Dashboard application.

Launch Dashboard by selecting the application in the Windows Start menu under IPICO Sports -> Dashboard.

When initially opened you should see a screen similar to this:

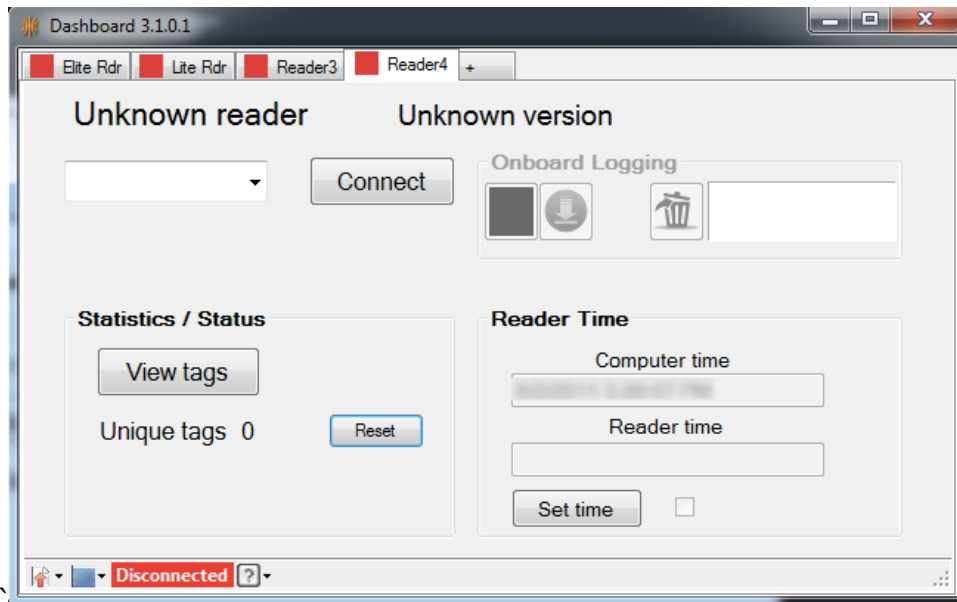


Figure 1

To connect to the Lite reader, enter the IP address of the reader 1 and click

the "Connect" 2 button.

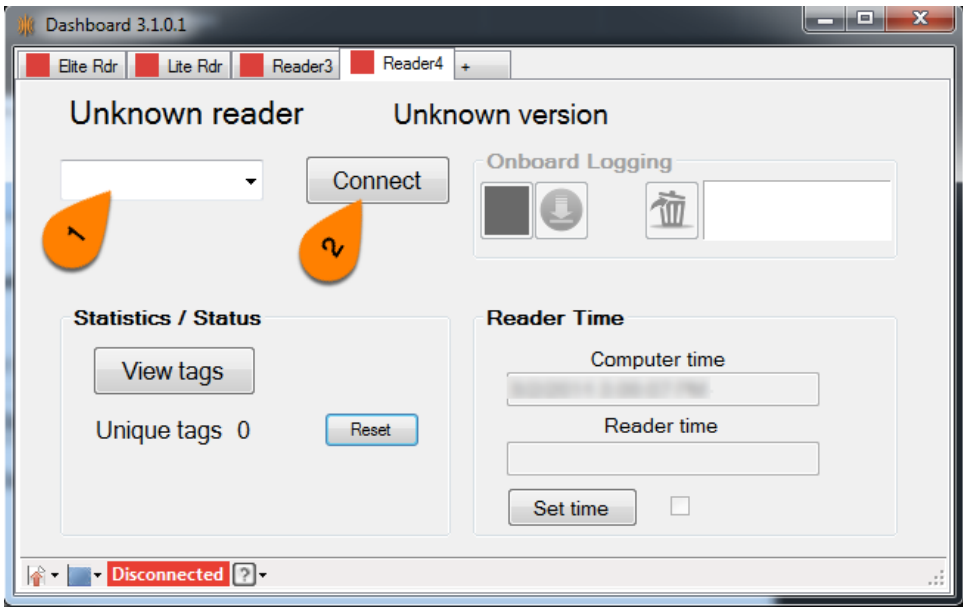



Figure 2

When connected, the red Disconnected bar will turn green and say “Connected” also the “Connect” button will change state to “Disconnect”. Also, the red box in the reader tab at the top will turn green for the reader you are connected to.

As in the example below:



Figure 3

To set the time on the reader adjusted to match the time on the connected computer click the “Set Time”  button.

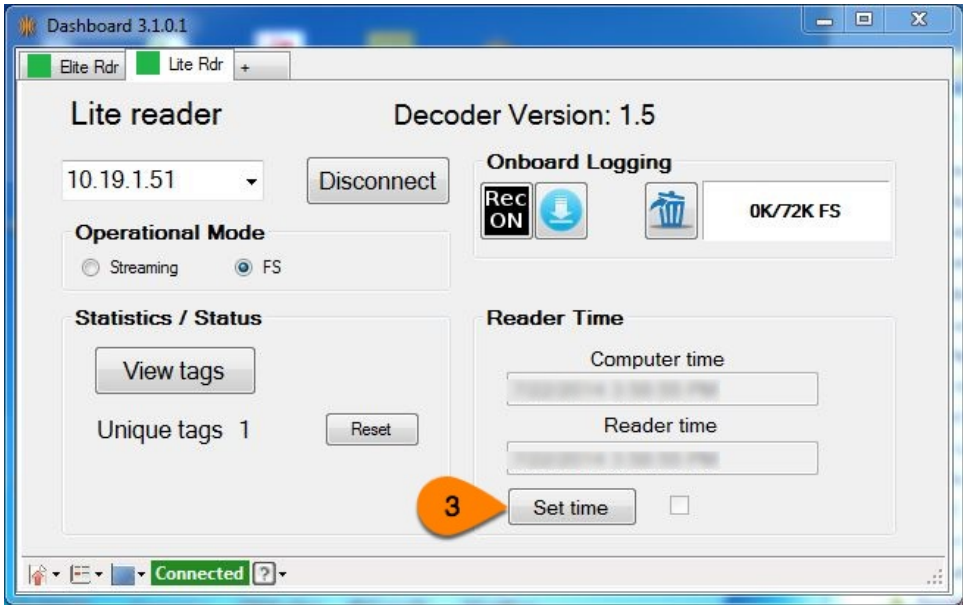


Figure 4

Note that the Computer time and the Reader time are the same in less than 30 seconds of clicking the Set Time button. (Dashboard updates the reader time every 30 seconds) Shortly after the Set Time button is clicked, a checkmark will appear in the box to the right, this indicates the set time command has been sent to the decoder. The checkbox will clear to indicate the set time process has completed successfully.

Note the unique tag counter advances as tags are read.

To turn on the onboard logging function, if your Lite reader is so equipped, (serial number AB000251 or later) click the “Rec On” button, this button will begin to flash red to indicate it is recording tag reads. The Operation Mode setting will change to “FS” indicating First Seen, this is to maximize the read event storage capability in the reader. Approximately 72,000 reads can be saved in the Lite reader using this method, if the streaming mode is selected fewer runners can be stored as their tag will read multiple times as they cross over the mats.

Congratulations, Dashboard is now monitoring your Lite reader.

We encourage you to further explore the many features and functions available in Dashboard by reviewing the Features Description section of this document.

## Elite Reader Quick Start

To connect the Dashboard to a Elite reader, please make sure the reader is connected via the Ethernet connection to the PC running the Dashboard application.

Launch Dashboard by selecting the application in the Windows Start menu under IPICO Sports -> Dashboard.

When initially opened you should see a screen similar to this:

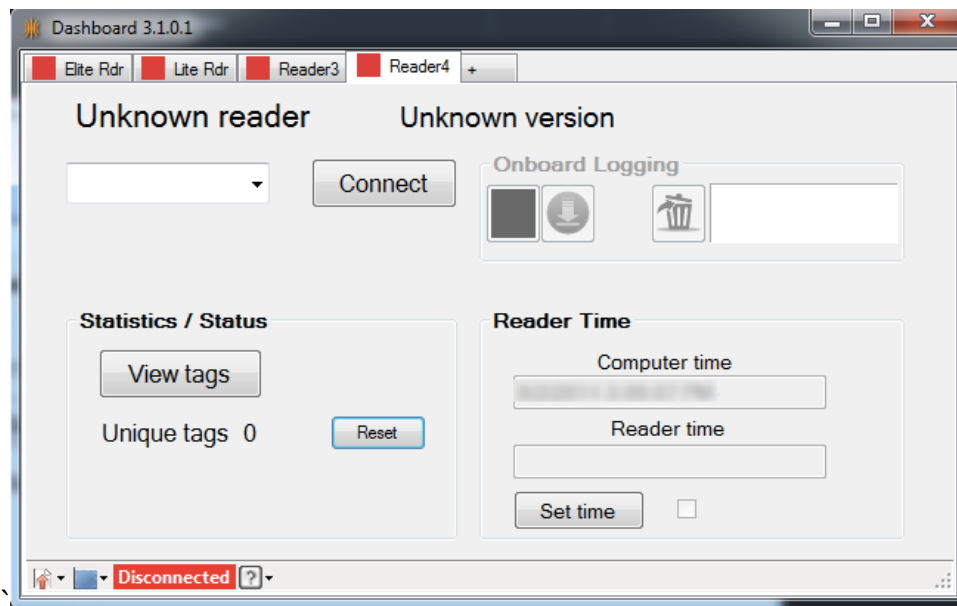


Figure 5

To connect to the Elite reader (Figure 6), enter the IP address of the reader

and click the “Connect” button.



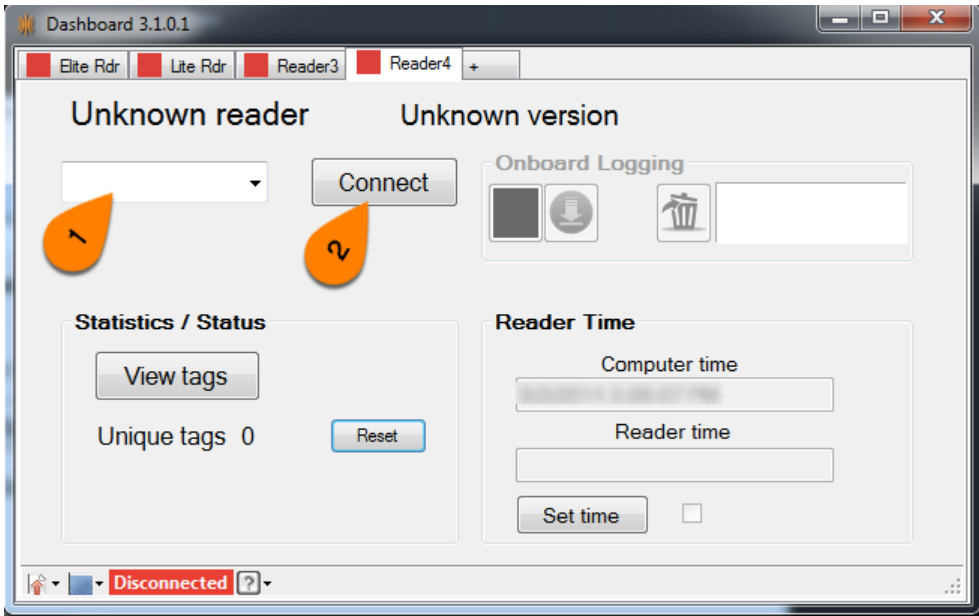


Figure 6

When connected, the red Disconnected bar will turn green and say “Connected” also the “Connect” button will change state to “Disconnect”. Also, the red box in the reader tab at the top will turn green for the reader you are connected to.

As in the example below:

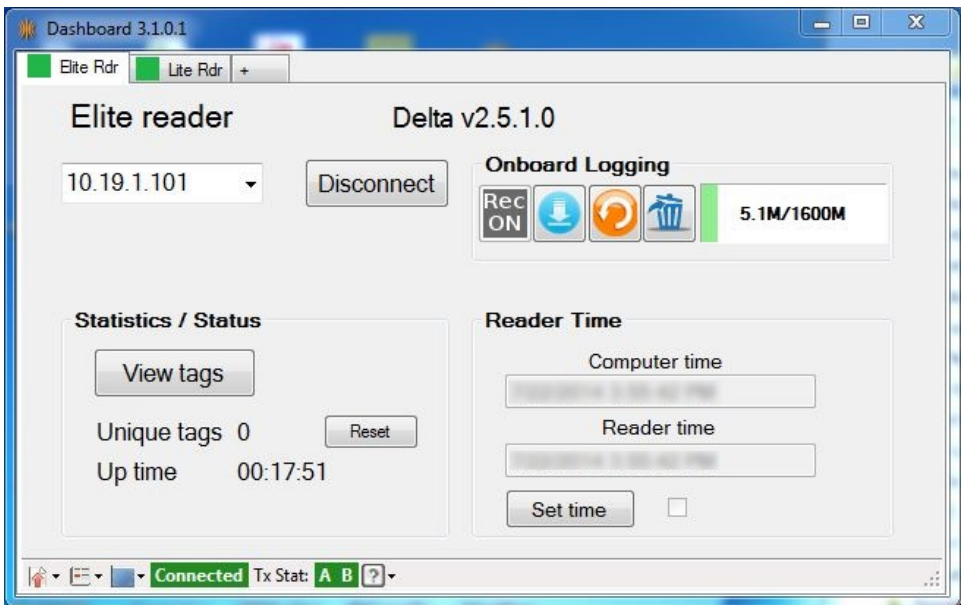



Figure 7

To set the time on the reader adjusted to match the time on the connected computer click the “Set Time”  button.

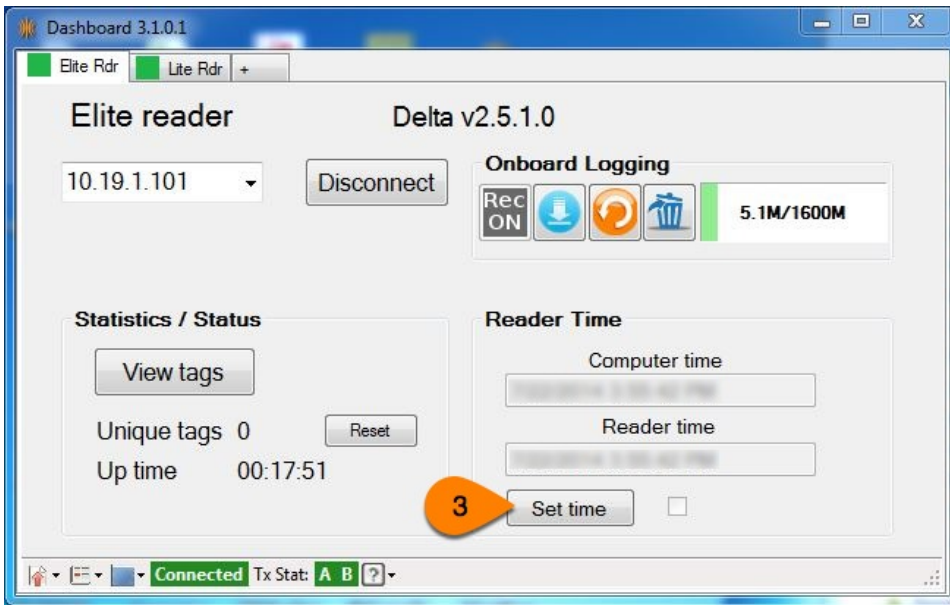


Figure 8

In Figure 8, note the Computer time and the Reader time are the same in less than 30 seconds of clicking the Set Time button. (Dashboard updates the reader time every 30 seconds) Shortly after the Set Time button is clicked, a checkmark will appear in the box to the right, this indicates the set time command has been sent to the decoder. The checkbox will clear to indicate the set time process has completed successfully.

Note the Unique Tag counter advances as tags are read.

Congratulations, Dashboard is now monitoring your Elite reader.

We encourage you to further explore the many features and functions available in Dashboard by reviewing the Features Description section of this document.

## Features Description

Dashboard has a number of features designed to help customers easily operate and manage their IPICO Sports equipment. Please examine this section in detail so you understand how best to manage your IPICO Sports readers. In the next Use Cases section we will describe a few ways you can use Dashboard in routine reader operations.

Please refer to Figure 9 below

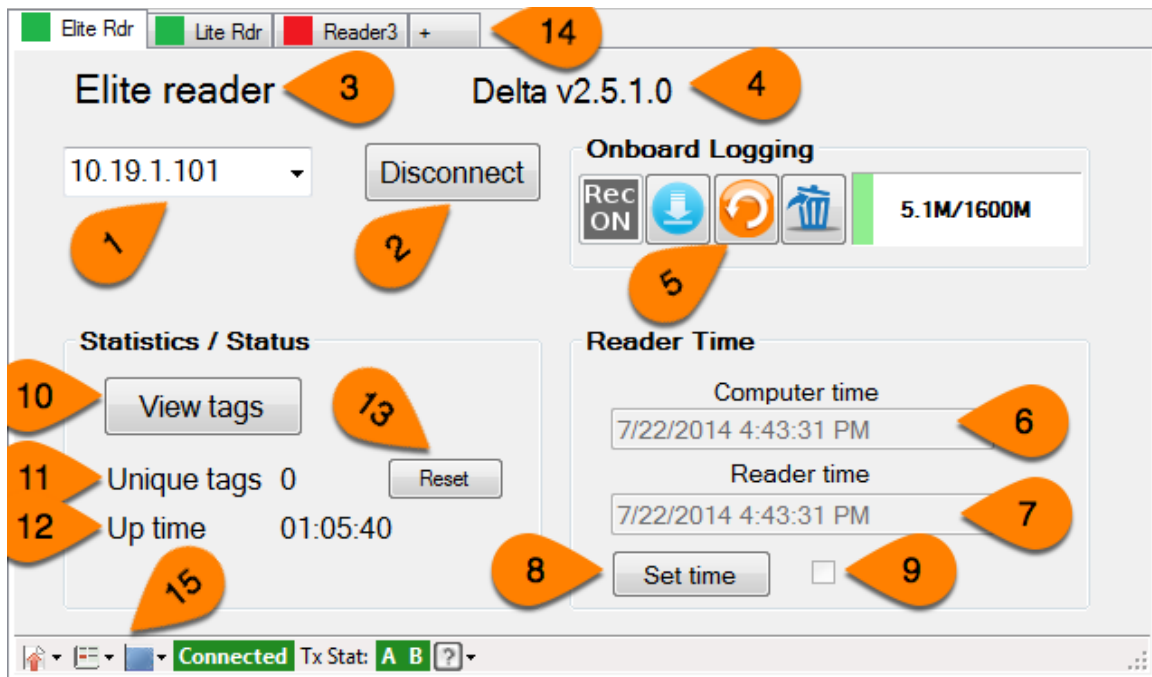


Figure 9

1) IP Address Window	Enter the IP Address of the desired reader
2) Connect Button	Click to connect the Dashboard application to the reader, button text changes to Disconnect when connected
3) Reader Type	Reader type is detected by the application and displayed
4) Software version	Version information is detected by the application and displayed
5) Onboard Logging menu	Area contains logging features, see detailed description below
6) Computer Time	Displays the current computer

	time
7) Reader Time	Displays the current reader time
8) Set Time Button	Causes the reader time to be set with the current computer time
9) Set Time Status indicator	A checkmark is displayed briefly when the time set function completes
10) View Tags Button	Click to view the tag read database – see detail screen below
11) Unique Tags Counter	Displays the number of unique tags seen since reset on the connected reader
12) Reader Uptime indicator	Displays the length of time the reader has been operating
13) Unique Tags Counter Reset Button	Click to reset the unique tags counter to zero
14) Tab menu	Tab menu displays readers – see details below
15) Task and Status Bar	The Task and Status bar contains menus and indicators detailed below

## Onboard Logging

The onboard logging functions (Figure 10) available vary depending on the reader configuration and features. In general, the menu looks like the picture below:

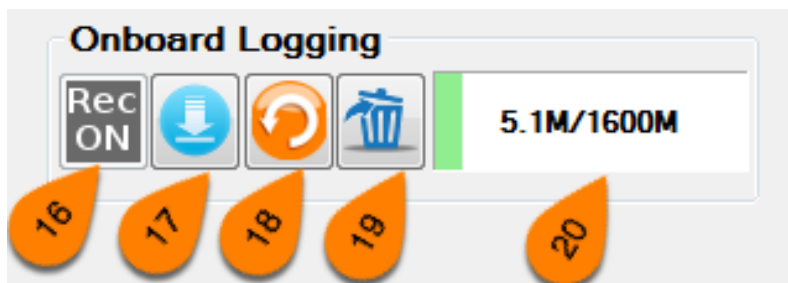


Figure 10

16) Record	Click to enable tag read data recording, button will flash red when enabled. ***This feature is
------------	---

	always on in an Elite reader***
17) Download	Click to open a file-save browser and download the tag data file
18) Replay	Click to open the Replay dialog window and set start and finish replay points
19) Trash	Empty the trash or clear the tag read history
20) Storage gauge	Indicates storage space available and used, updated every 30 seconds; number to the left of the slash is the amount used, the number to the right of the slash is the total space available

## View Tags

The View Tags button opens a new window (Figure 11) with access to several tag data management tools. Tag read data from the connected reader automatically streams into this database when tags are seen by the reader. Each reader has its own View Tags screen so you can manipulate the data uniquely by reader. Tag reads can be filtered by First Seen or Last Seen status, Decoder ID or Tag ID. Also, reads can be sorted by the column headings such as time, tag ID, decoder ID or date.

While connected to a reader and tags are being read if the View Tags window is opened streaming data is suspended temporarily until the “Update” button is pressed to refresh the screen. This is helpful so the screen is not updating while you are working with it.

Have you ever timed a race with multiple readers and forgotten to set the time on all the readers to a common source? Many of us have, to help we have incorporated a “Fix Times” feature that allows you to select the reader to be adjusted and add or subtract a few seconds or days to the original times so they will match with the other readers.

There is also an “Import” button to allow you to import a tag data file after an event to view and edit it post race.

Likewise, there is an “Export” function so the corrected tag data files can be saved and then imported into a scoring software package.

	id	Dec id	Tag uid	Chan1	Chan2	Date	Time	1/100	FSLs	Computer Date/Time
▶	1	0	0580000ccc67d	1	0	140722	154906	25	FS	2014-07-22 15:49:06
	2	0	0580000ccc67d	1	0	140722	154906	25	LS	2014-07-22 15:49:06
	3	0	0580000ccc67d	0	1	140722	154923	69	FS	2014-07-22 15:49:23
	4	0	0580000ccc67d	0	1	140722	154923	69	LS	2014-07-22 15:49:23
	5	0	0580000ccc67d	0	1	140722	172831	37	FS	2014-07-22 17:28:31
	6	0	0580000ccc67d	0	1	140722	172831	37	LS	2014-07-22 17:28:31

Figure 11

## Tab Menu

The Tab menu (Figure 12) at the top of the screen gives a quick status of all the connected readers. You can right-click on a tab to open the tab menu. From this menu you can close the tab and disconnect from the reader, change the name of the reader to personalize it for the location or IP address and open connections to all the configured readers in Dashboard.

The screenshot shows a web interface for managing readers. At the top, there are tabs for 'Elite Rdr', 'Lite Rdr', and 'Reader3'. A context menu is open over the 'Lite Rdr' tab, showing options: 'Close tab', 'Change name', and 'Connect All'. The main content area for the 'Lite Rdr' shows the IP address '10.19.1.51' and a 'Disconnect' button. Below this, the 'Operational Mode' is set to 'FS' (with 'Streaming' also available). The 'Statistics / Status' section shows 'Unique tags 1' and a 'View tags' button. The 'Reader Time' section shows 'Computer time' and 'Reader time' both as '7/22/2014 6:18:29 PM', with a 'Set time' button. A 'Decoder Version: 1.5' label is also present. At the bottom, a status bar shows 'Connected'.

Figure 12

## Task and Status Bar

The Task and Status Bar (Figure 13) contains reader-specific menus and indicators to help manage and monitor the reader.

### Lite Reader

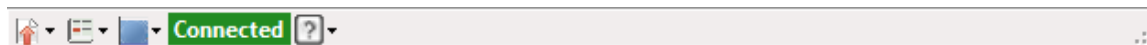


Figure 13

The Lite reader Task and Status bar, located at the bottom of the Dashboard window, has three task icons on the left of the bar.

The first icon on the left is the View Tags menu (Figure 14) where you can view the tag data screen in a new window or save the tags in the database to a separate file for import into a scoring application.

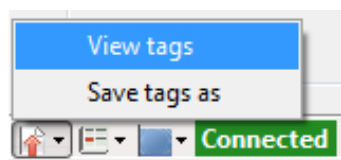


Figure 14

The second icon from the left is the Reader configuration menu (Figure 15). From this menu you can designate a unique number to be added to the tag data records to identify a specific Lite reader. This is useful if you have data from multiple Lite readers to import into scoring software.

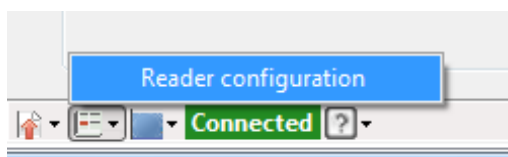


Figure 15

The Connection Status indicator (Figure 15) is either red or green to indicate the reader is disconnected or connected to Dashboard.

To the right of the Connection Status indicator is the Help menu. The Help menu allows you to verify the software version number, check for updates to the software and view the release notes.

## Elite Reader



Figure 16

The Elite reader Task and Status bar (Figure 16), located at the bottom of the Dashboard window, has three task icons on the left of the bar.

The first icon on the left is the View Tags menu (Figure 17) where you can view the tag data screen in a new window or save the tags in the database to a separate file for import into a scoring application.

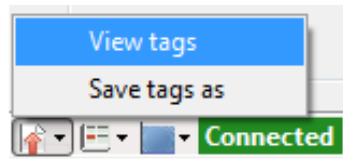


Figure 17

The Elite reader menu (Figure 18) contains a series of capabilities to manage the reader. The “Actions” menu has selections to upload the VPN certificate [to access the TimeLink service] and an option to get the version numbers of the various reader components for service and support.

Selecting “Upload” opens a dialog box to select the VPN certificate file to be uploaded.

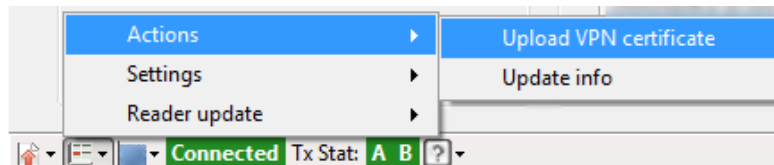


Figure 18

The “Settings” menu (Figure 19) offers the ability to enable or disable a recently added feature to add line numbers to the First Seen-Last Seen records. This feature can be useful for tracking any potential missing tag reads caused by communications issues and then to help resend the reads using the Replay function.



Figure 19



The “Reader Update” menu (Figure 20) offers functions to install OS updates on the readers and keep your readers operating with the latest improvements. These items open additional windows to display the status of the updates.

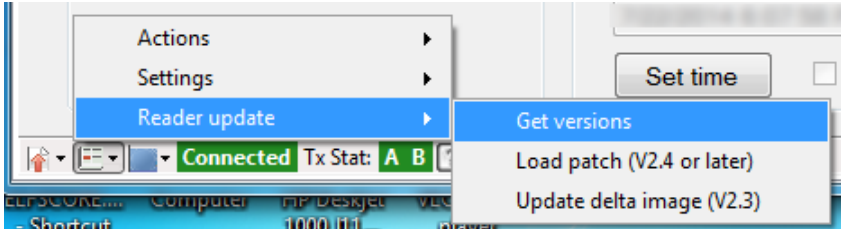


Figure 20

## Appendix

### Use Cases - Examples

Here are several examples of how the Dashboard can be used in managing and monitoring IPICO Sports readers.

#### Fixing Times (Figure A)

This feature is useful for unfortunate situations where the time was not properly synchronized on a reader prior to the event. The times collected from the reader can be loaded into Dashboard on the View Tags screen and an offset added or subtracted from the recorded time to bring the times into sync with the other readers at the event.

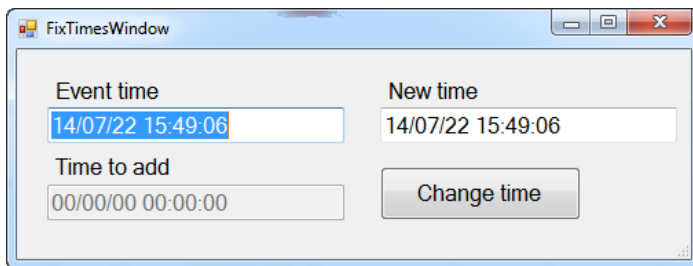


Figure A

#### Installing TimeLink VPN Keys

To use the Dashboard to install TimeLink VPN reader keys, download the keys onto your computer from the IPICO Sports website (Figure B). Then use Dashboard to install them onto the reader.

#### TIME LINK VPN KEY GENERATOR

Time Link VPN Key Generator..

##### *Generated VPN files*


Name: IPICO_Sports_1_r Type: Reader IP Address: 10.87.7.85	Download Key	
Name: IPICO_Sports_2_c Type: Computer IP Address: 10.87.7.89	Download Key	

Figure B

Once Dashboard is connected to the Elite reader the Elite reader actions menu (Figure C) will be available on the lower task bar of the Dashboard window. See the screenshot below.

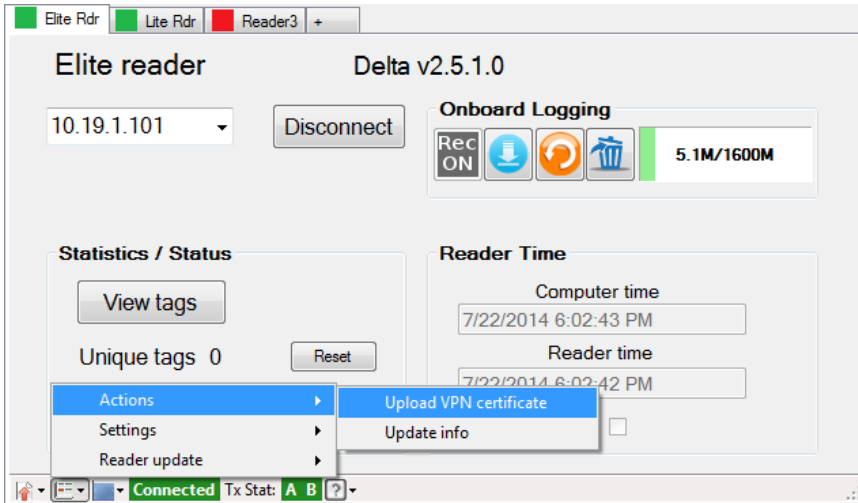


Figure C

### Lite Reader Onboard Logging

To enable Onboard Logging for Lite readers with serial numbers AB000251 and later, simply click the “Rec ON” button (Figure D).

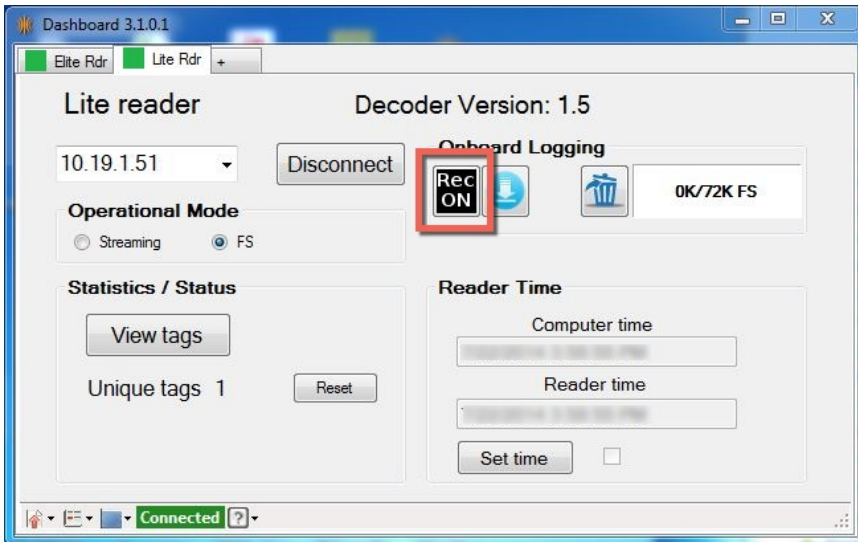


Figure D

Once clicked, the button (Figure E) will begin to flash red indicating tag reads are being logged. Due to the limited space available, enabling the logging function will

automatically enable the FS operational mode so only first seen occurrences of a tag are logged. There is space available for logging of about 72,000 tag reads.



Figure E

To download the tag read from the logging area, simply click the download button. This will open a Save As dialog box where you can select the location and name for the log file. Click Save to complete the file save action.

To clear the log history, click the Trash can button, a warning dialog (Figure F) will open to confirm the deletion of all the records as below.

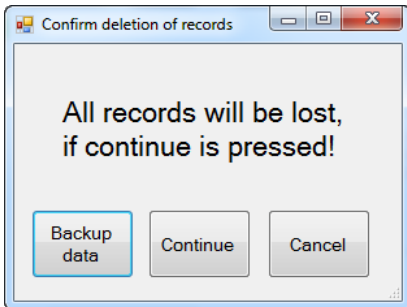


Figure F