



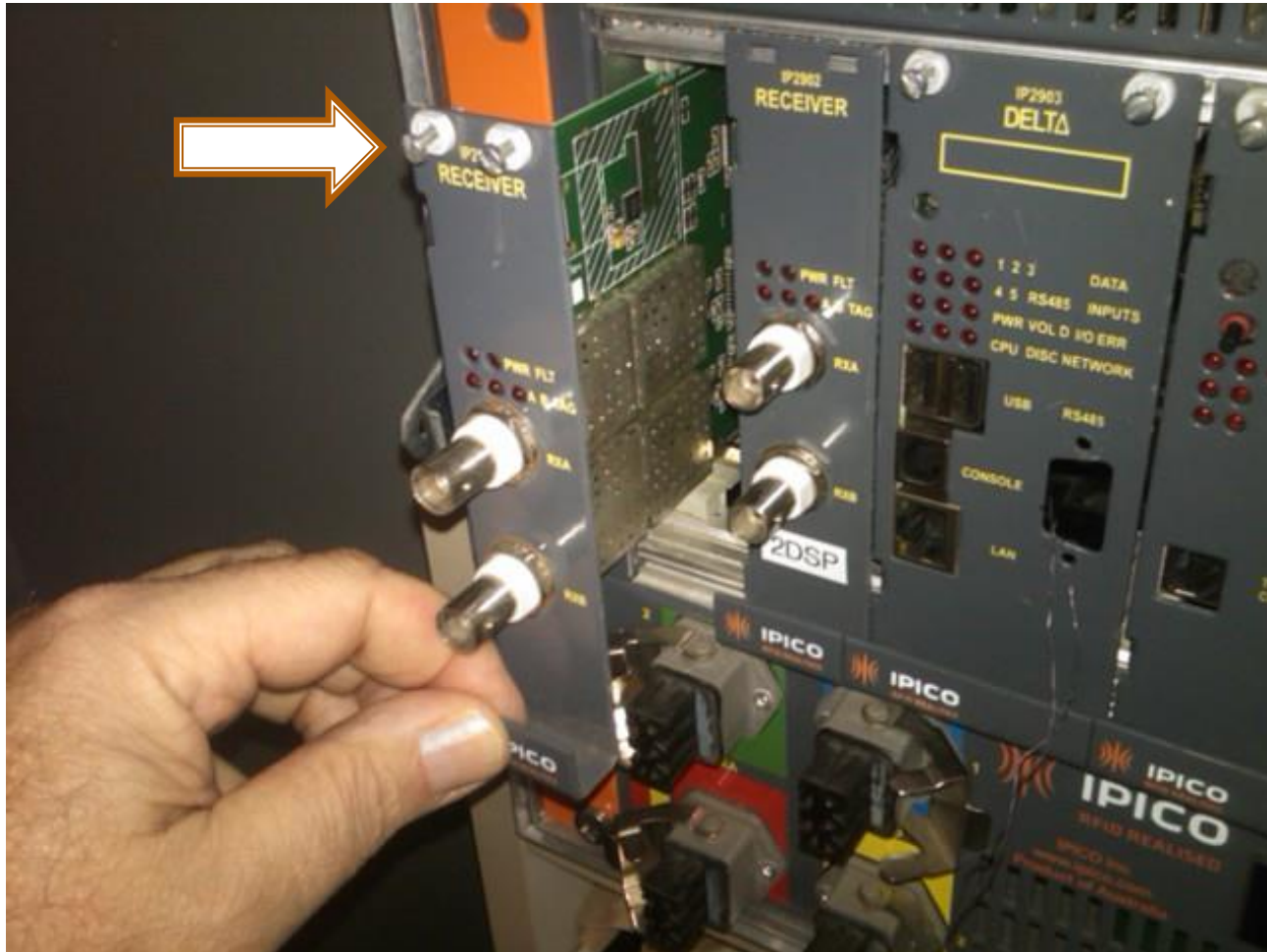
Decoder Battery Replacement

Ipico Elite Reader Maintenance

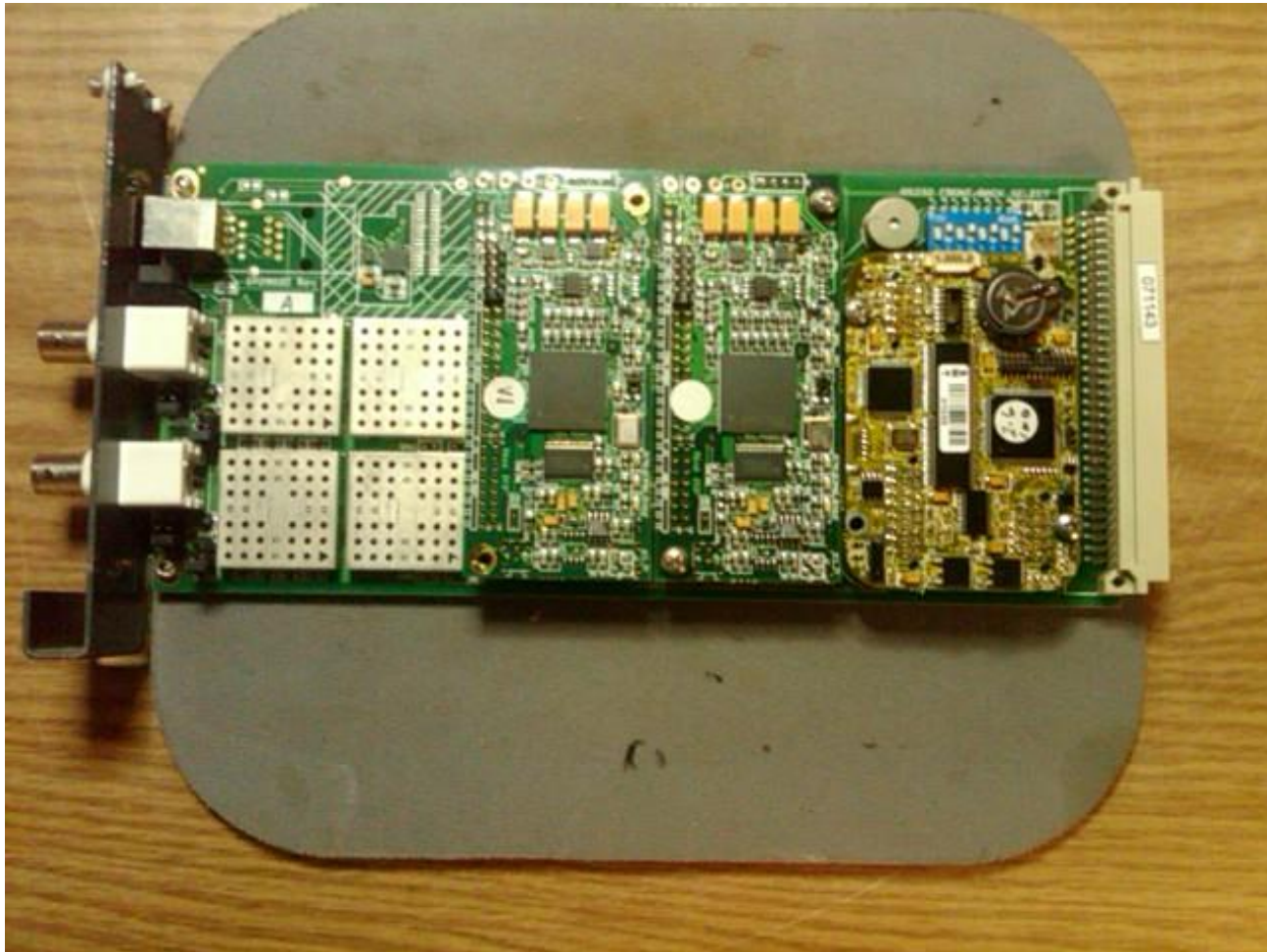
Beginning Disassembly-Tools

- #1 Slotted Screwdriver
- Battery: CR1220 Lithium Batteries

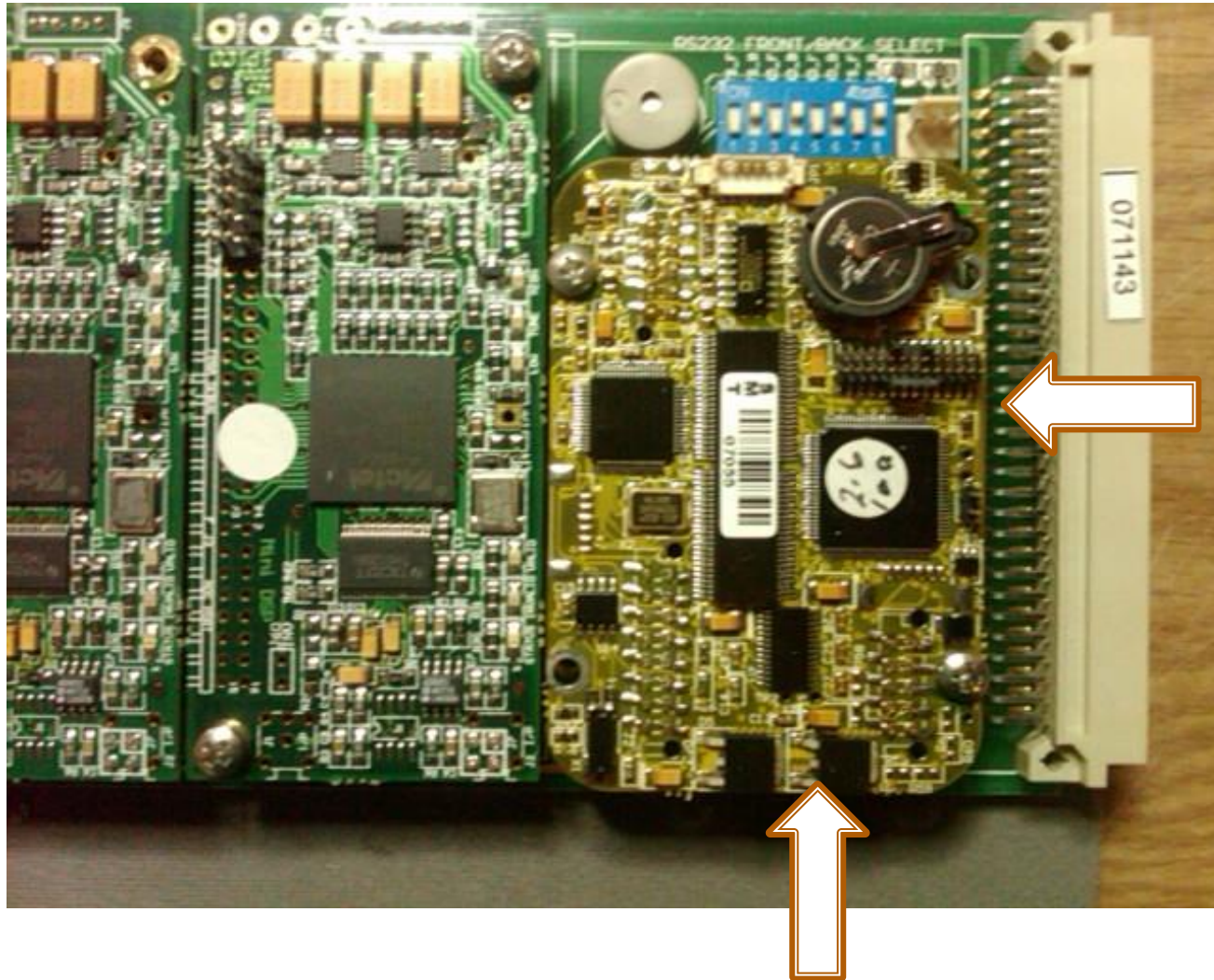
Removal of Receiver Card from Card Cage



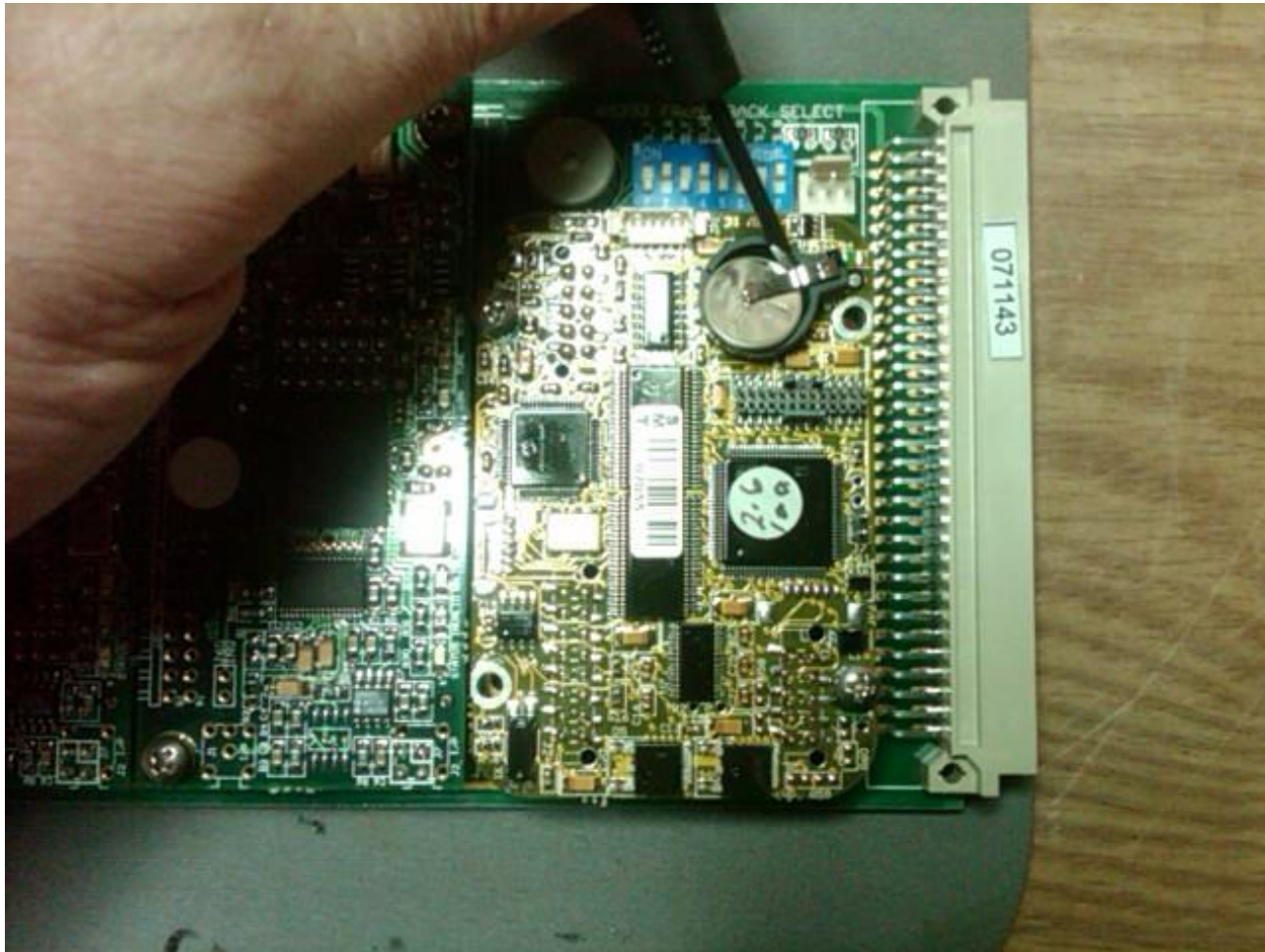
Receiver Card



Receiver Card - Decoder



Removal of Battery from Decoder



CR1220 Battery



Notes

- Once you have removed and replaced the battery, you will get a loud, solid tone from the decoders on some older readers until they have reset themselves (approx.90 sec.)
- You must have the Delta shutdown completely when performing this procedure or the loud, annoying tone will not stop!

Questions?



IPICO
SPORTS