



Decoder Battery Replacement

Ipico Lite Reader Maintenance

Beginning Disassembly-Tools

- 4mm or 5/32" Allen Wrench
- #2 Phillips Screwdriver
- CR1220 Lithium Battery

Removal of Retaining Screws



Removal of Retaining Screws



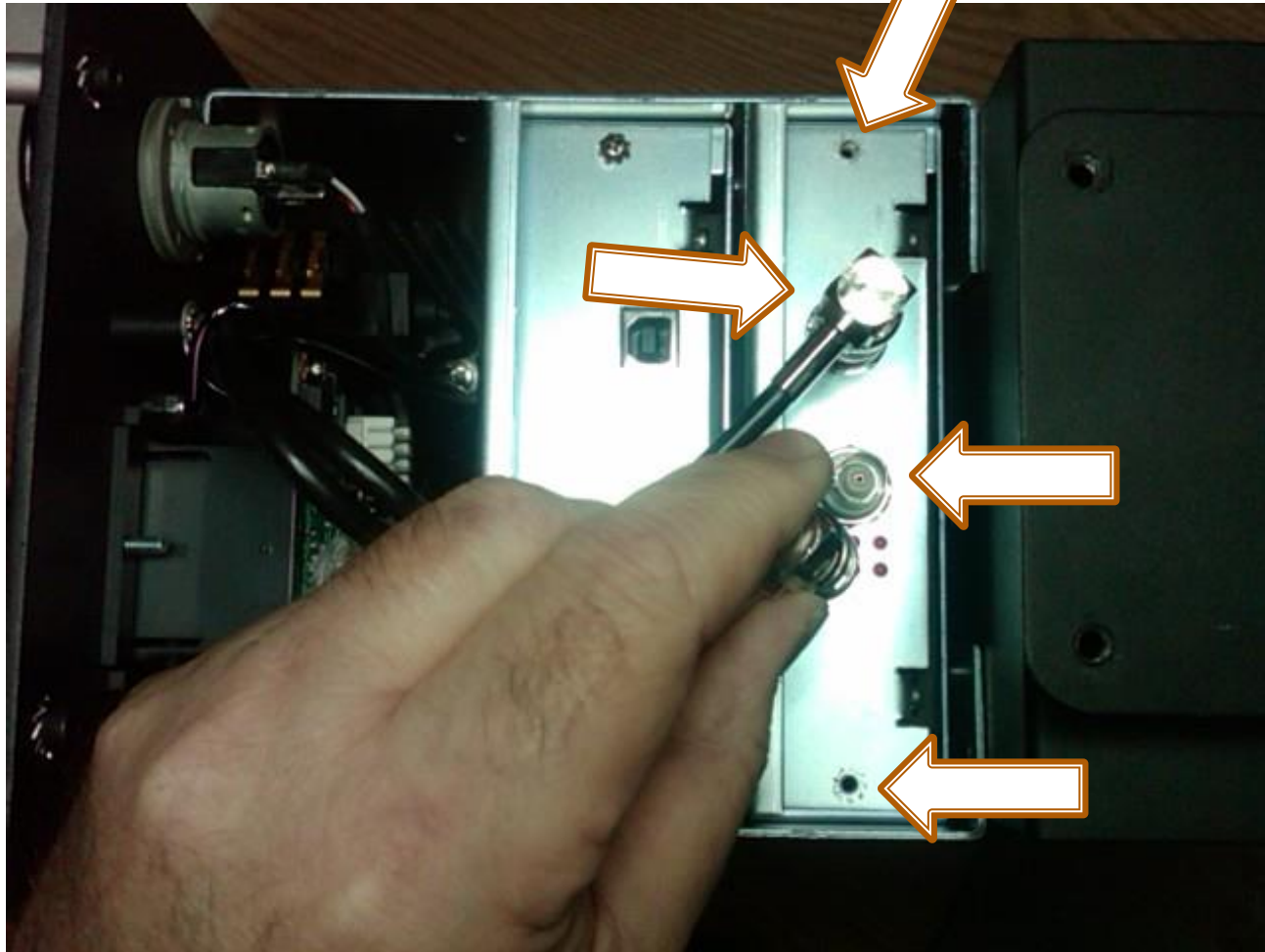
Separation of Chassis and Case



Reader Chassis



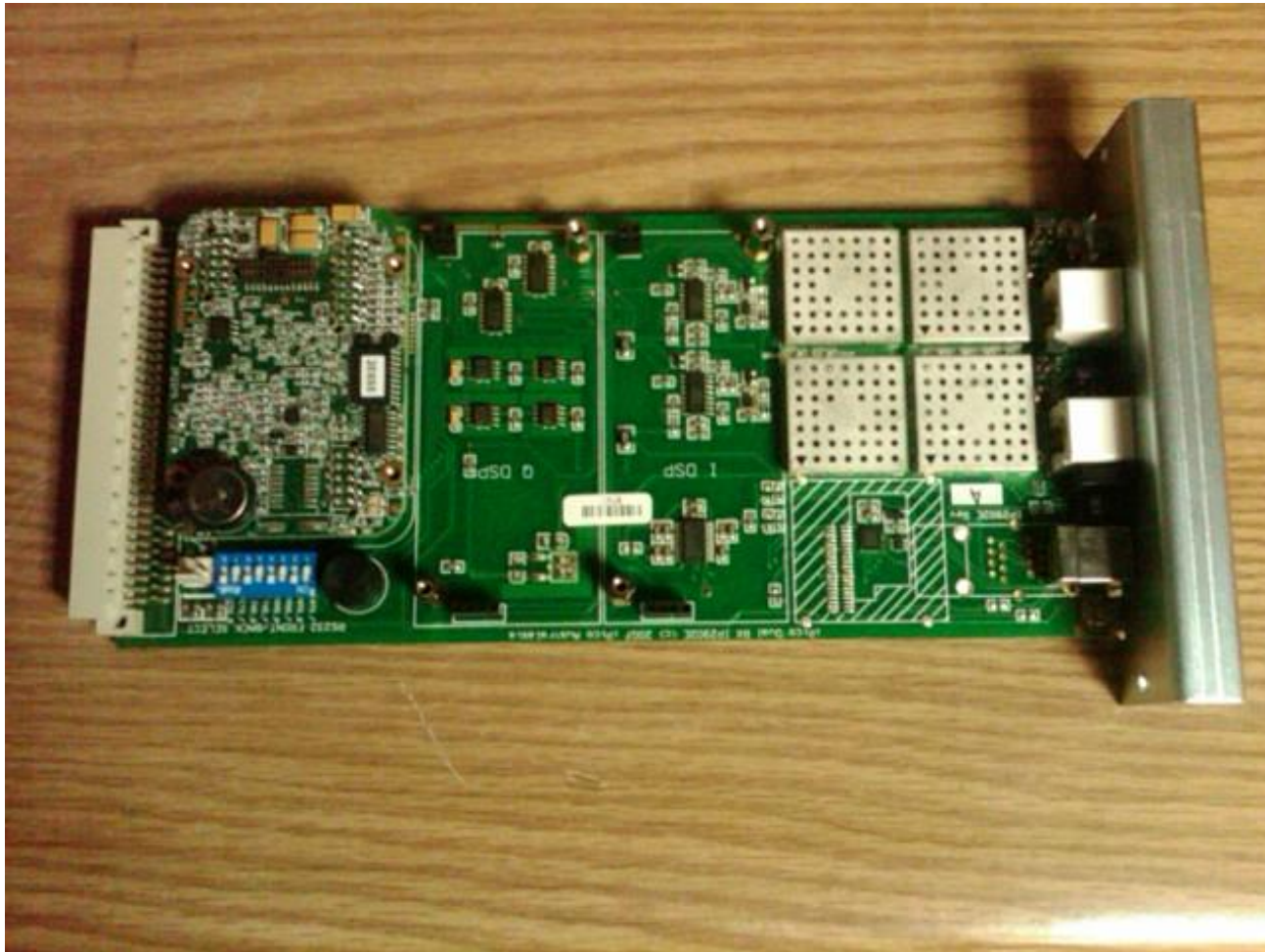
Removal of BNC Cable Connectors and Mounting Screws



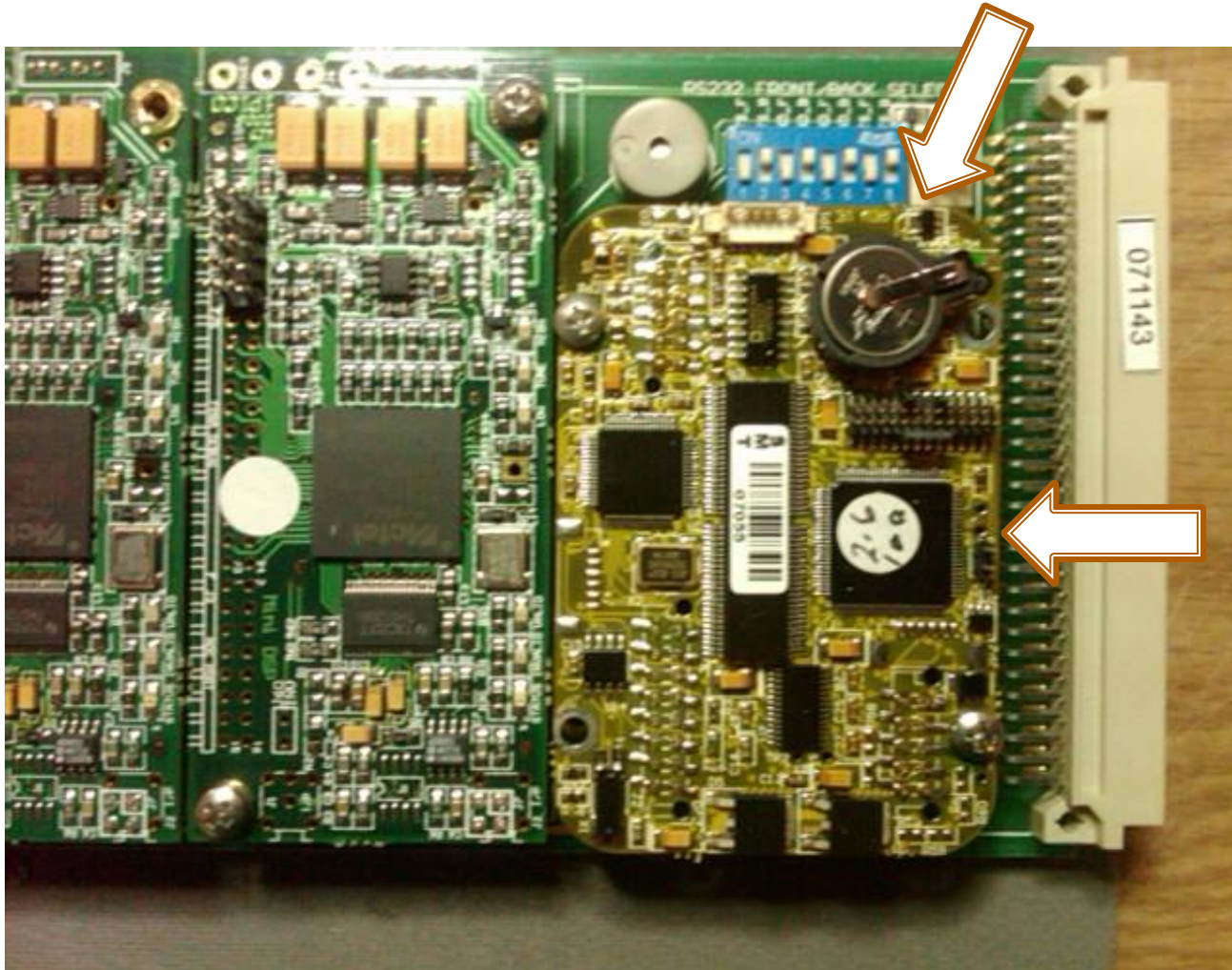
Receiver Card Removal



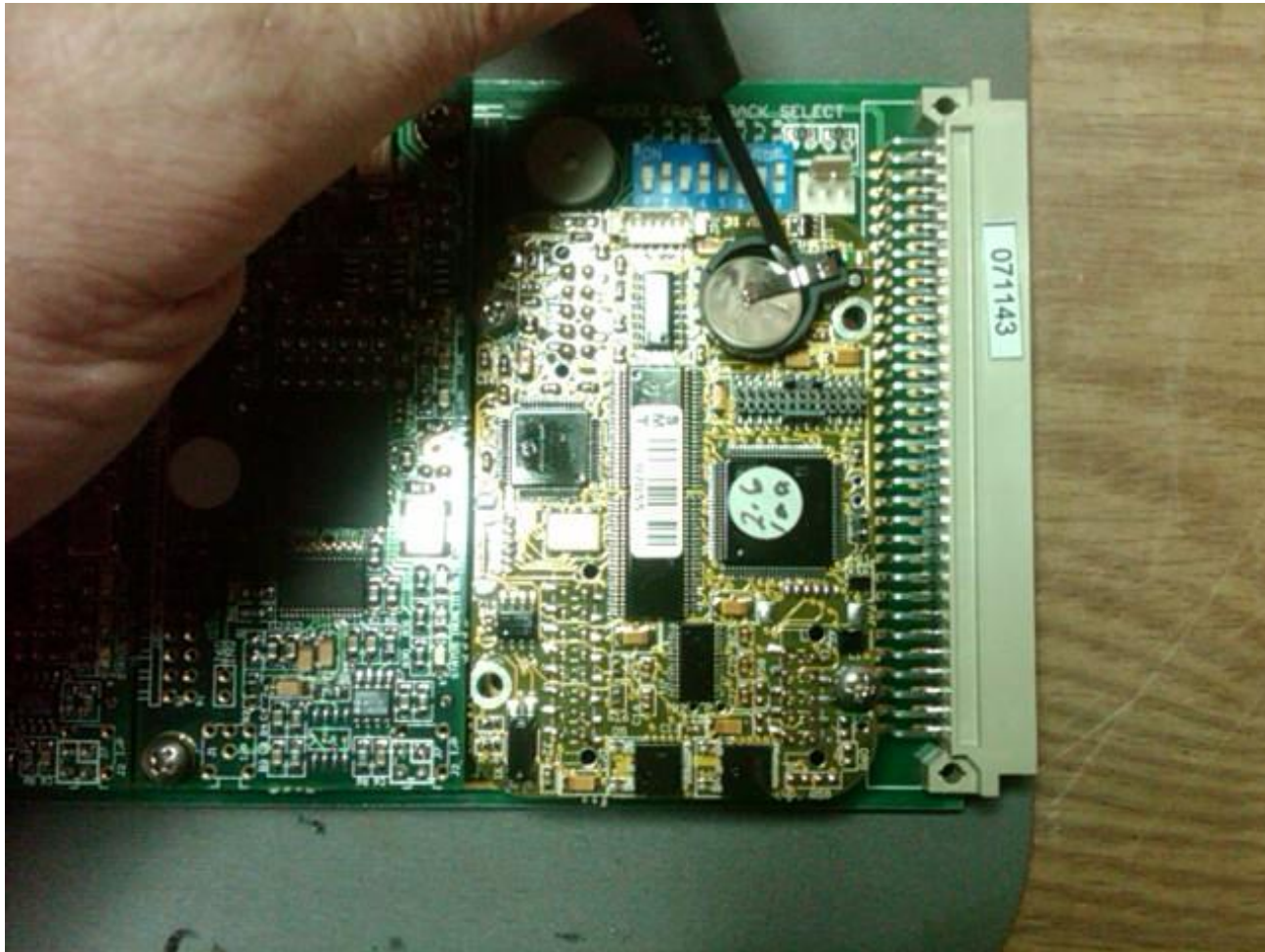
Receiver Card



Decoder Card



CR1220 Battery Removal



CR1220 Battery



Questions?



IPICO
SPORTS